

# KM-255BAH

## CRESCENT CUBER WITH BUILT-IN STORAGE BIN

Item # \_\_\_\_\_

Project: \_\_\_\_\_

Qty: \_\_\_\_\_

\*AutoCad available on KCL

KM-255BAH

4/08

Item # 13207

### CUBER DIMENSIONS W x D x H




**KM-255BAH**  
30 x 28 x 39\*  
\*with 6" legs



KM-255

### KM-255BAH Air-Cooled Shown



- Up to 235 lbs. of ice production per 24 hours
- Built-in 120 lbs. ice storage
- Individual crescent cube
- Protected by *HoshiGuard* Antimicrobial Agent 
- CycleSaver® Design 
- EverCheck® alert system 
- Stainless steel evaporator
- Corrosion-resistant stainless exterior surfaces provide longer life
- Removable air filter
- Complies with California Energy Commission guidelines (CEC)



### Warranty

Valid in United States, Canada, Puerto Rico, & U.S. Territories. Contact factory for warranty in other countries.

**Three Year** - Parts & Labor on entire machine.

**Five Year** - Parts & Labor on: Evaporator.

**Five Year** - Parts on: Compressor, air-cooled condenser coil.



# KM-255BAH CRESCENT CUBER WITH BUILT-IN STORAGE BIN

**DIMENSIONS**  
W x D x H  
**KM-255BAH**  
30 x 28 x 39"  
\*with 6" legs

• Air-cooled

### AIR-COOLED

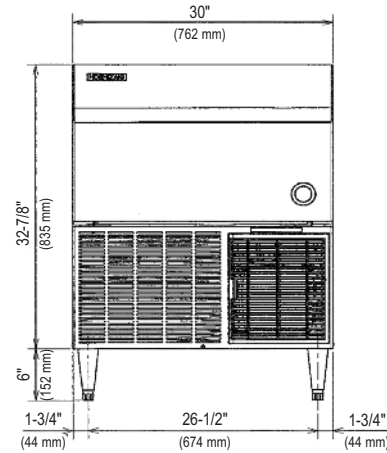
Water Temp° F.	50°	70°	90°	
Air Temp° F.	70°	235	227	207
	80°	229	216	191
	90°	227	207	184

### UTILITY CONSUMPTION

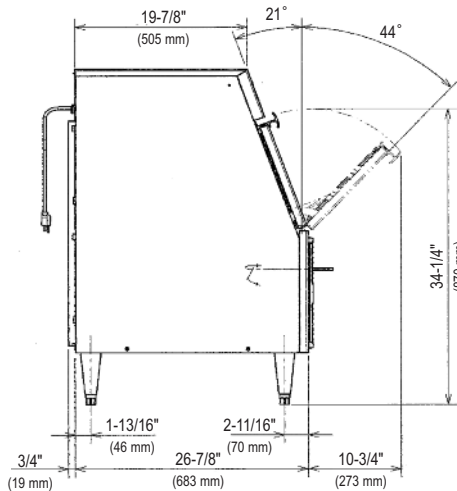
Model Number	Ice Production Per Cycle		KWH per 100 LBS. 90/70	Potable Water Gal. per 100 lbs.	Condenser Water Gal. per 100 lbs.
	Lbs.	Cubes			
KM-255BAH	4	204	9.6	24.7	N/A

### SPECIFICATIONS

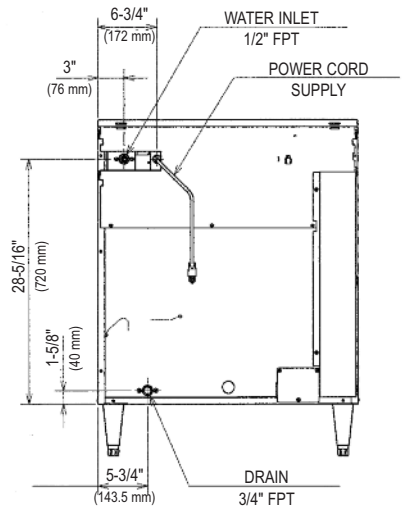
Model Number	Condenser	Amperage	Shipping Weight
KM-255BAH	Air-Cooled	9.0	220 lbs.



FRONT VIEW



SIDE VIEW



AIR-COOLED UNIT

### ELECTRICAL & PLUMBING/KM-255BAH

- 115V/60/1
- 3/8" OD copper or equivalent independent potable water supply
- 3/4" FPT independent drain connection
- 1/2" Potable water inlet

### OPERATING LIMITS

- Ambient Temp Range 45 - 100°F
- Water Temp Range 45 - 90°F
- Water Pressure 10 - 113psig
- Voltage Range 104 - 127V

### SERVICE

- Panels easily removed and all components accessible for service.
- Removable/cleanable air filters



© HOSHIZAKI AMERICA, INC.

618 Hwy. 74 S., Peachtree City, GA 30269

TEL 1-800-438-6087

FAX 1-800-345-1325

www.hoshizaki.com

Printed in U.S.A.

